

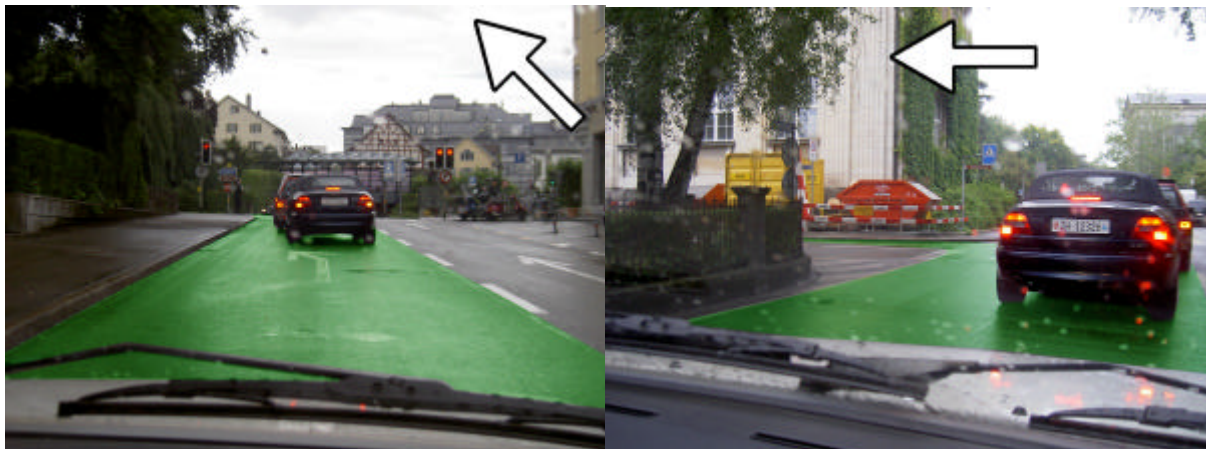
How to get to Buenzli from Zurich Airport

When arriving at the Airport Zurich, you'll first have to find the railways (*downstairs*). Make sure you buy your train tickets before entering the train. There you catch the next train in direction of *Winterthur* or *St.Gallen*. The trip takes about 15 minutes and there are about 3 trains per hour.

When you're in Winterthur, you get out of the train and walk forward (in the direction in which the trains has been driving, at least if you're coming from Zürich, else, it's the other direction) until the last subway on the stage, walk down the stairs, turn right and walk up the stairs again.

There you see some bus stops on a pretty large street. From there, you walk straight forward until you're standing in front of a big building - the 'Manor'. There you turn left, walk a bit, turn right the first street, and from there it is all straight forward (see pictures below).

When walking down this street you see on the right side a parking garage and later a park. Continue walking down this street until the end of the park, there you turn left and this is the small street (*Liebestrasse*) where the *Kirchgemeindehaus* is.



The adresse of the location is:

Kirchgemeindehaus Winterthur
Liebestrasse 3
CH-8400 Winterthur

Ask the people if you don't find it. They commonly know the Kirchgemeindehaus. It's near the Kunstmuseum (Museum of Arts)